

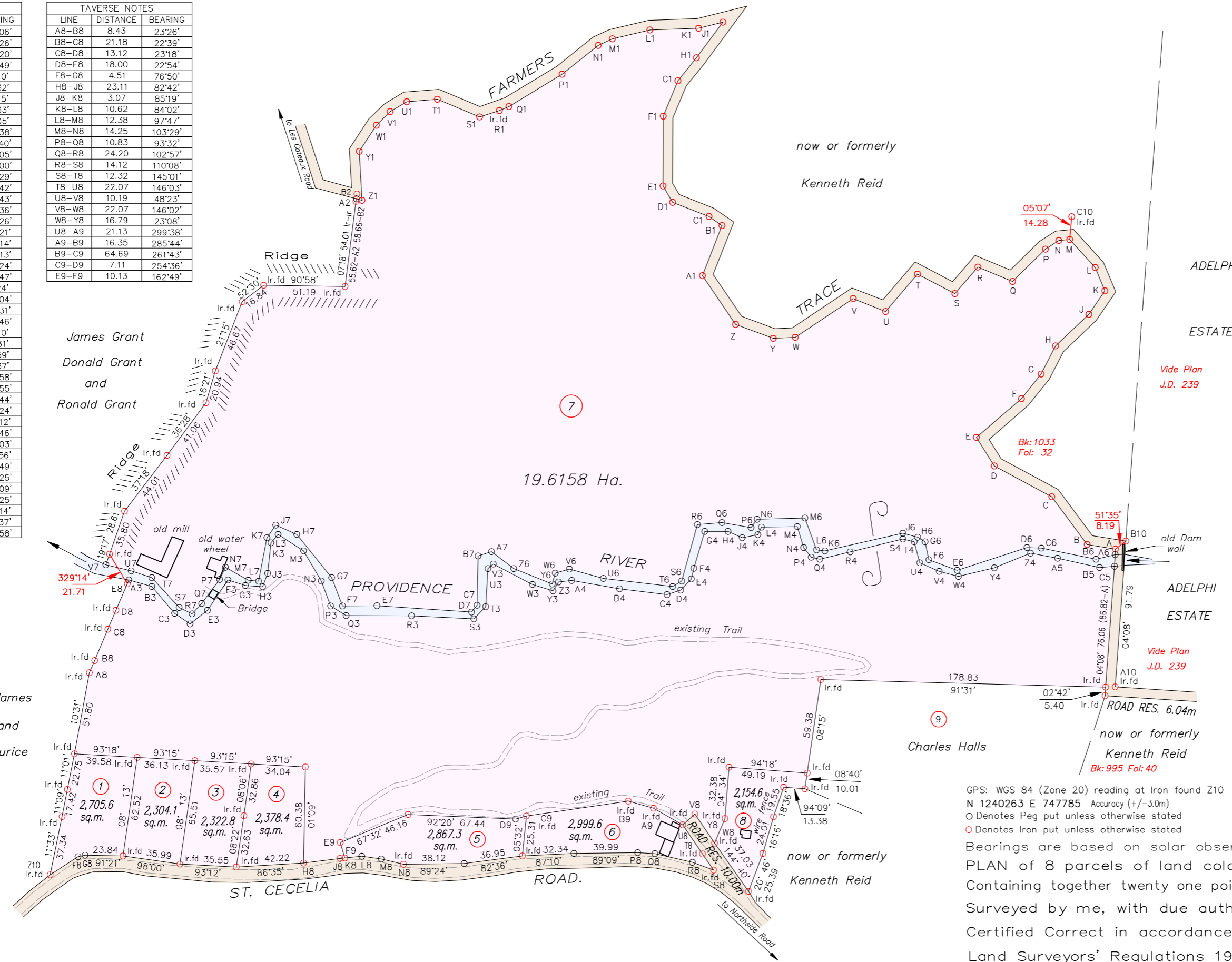


LINE	DISTANCE	BEARING
A-B	18.10	279°06'
B-C	37.33	323°26'
C-D	40.86	298°20'
D-E	21.20	327°49'
E-F	37.24	49°10'
F-G	19.88	38°32'
G-H	19.89	27°15'
H-J	28.88	46°33'
J-K	17.75	34°05'
K-L	15.82	337°38'
L-M	23.83	317°40'
M-N	6.80	265°05'
N-P	10.06	237°00'
P-Q	28.96	225°29'
Q-R	23.57	292°42'
R-S	22.13	220°43'
S-T	26.48	297°36'
T-U	30.78	220°26'
U-V	21.91	291°21'
V-W	43.65	236°14'
W-Y	13.84	267°13'
Y-Z	25.29	290°24'
Z-A1	37.01	325°47'
A1-B1	33.72	21°24'
B1-C1	9.93	305°04'
C1-D1	24.57	291°31'
D1-E1	11.93	329°46'
E1-F1	43.85	00°10'
F1-G1	23.93	22°31'
G1-H1	18.62	38°59'
H1-J1	27.91	36°37'
J1-K1	15.82	255°58'
K1-L1	30.65	267°55'
L1-M1	24.13	256°44'
M1-N1	9.80	245°24'
N1-P1	28.96	231°12'
P1-Q1	39.05	238°46'
Q1-R1	6.50	247°03'
R1-S1	13.17	251°56'
S1-T1	28.74	292°49'
T1-U1	19.28	265°25'
U1-V1	12.16	239°09'
V1-W1	12.14	225°25'
W1-Y1	19.62	213°14'
Y1-Z1	30.89	176°37'
Z1-A2	3.78	284°58'

LINE	DISTANCE	BEARING
A8-B8	8.43	23°26'
B8-C8	21.18	22°39'
C8-D8	13.12	23°18'
D8-E8	18.00	22°54'
F8-G8	4.51	76°50'
H8-J8	23.11	82°42'
J8-K8	3.07	85°19'
K8-L8	10.62	84°02'
L8-M8	12.38	97°47'
M8-N8	14.25	103°29'
P8-Q8	10.83	93°32'
Q8-R8	24.20	102°57'
R8-S8	14.12	110°08'
S8-T8	12.32	145°01'
T8-U8	22.07	146°03'
U8-V8	10.19	48°23'
V8-W8	22.07	146°02'
W8-Y8	16.79	23°08'
U8-A9	21.13	299°38'
A9-B9	16.35	285°44'
B9-C9	64.69	261°43'
C9-D9	7.11	254°36'
E9-F9	10.13	162°49'

LINE	DISTANCE	BEARING
A3-B3	15.09	105°59'
B3-C3	21.97	139°41'
C3-D3	11.78	124°09'
D3-E3	13.92	51°57'
E3-F3	22.93	34°09'
F3-G3	11.49	108°04'
G3-H3	10.81	93°47'
H3-J3	8.95	21°16'
J3-K3	19.37	06°02'
K3-L3	6.86	39°57'
L3-M3	19.04	122°38'
M3-N3	21.95	149°29'
N3-P3	16.73	159°42'
P3-Q3	11.51	121°36'
Q3-R3	41.12	90°17'
R3-S3	39.04	92°46'
S3-T3	10.61	45°01'
T3-U3	24.05	03°08'
U3-V3	4.46	48°49'
V3-W3	27.85	117°31'
W3-Y3	13.41	107°02'
Y3-Z3	6.49	32°49'
Z3-A4	8.20	82°42'
A4-B4	30.52	100°02'
B4-C4	30.04	96°50'
C4-D4	9.11	72°04'
D4-E4	9.60	43°10'
E4-F4	6.88	13°11'
F4-G4	24.18	16°25'
G4-H4	14.61	90°07'
H4-J4	9.82	113°32'
J4-K4	9.95	79°16'
K4-L4	5.20	24°55'
L4-M4	22.57	89°07'
M4-N4	13.76	163°29'
N4-P4	7.68	141°20'
P4-Q4	5.55	103°30'
Q4-R4	19.64	76°19'
R4-S4	34.04	76°17'
S4-T4	7.29	104°26'
T4-U4	13.55	164°59'
U4-V4	13.38	113°53'
V4-W4	12.44	105°01'
W4-Y4	23.33	76°24'
Y4-Z4	24.42	68°04'
Z4-A5	17.25	100°35'
A5-B5	27.07	102°20'
B5-C5	9.25	85°21'
C5-A6	7.26	04°08'

LINE	DISTANCE	BEARING
A6-B6	12.37	256°38'
B6-C6	34.97	281°38'
C6-D6	9.15	272°03'
D6-E6	45.98	251°53'
E6-F6	19.06	290°26'
F6-G6	11.46	348°01'
G6-H6	5.40	302°42'
H6-J6	9.79	285°12'
J6-K6	50.10	257°06'
K6-L6	5.35	278°02'
L6-M6	21.28	340°06'
M6-N6	30.04	268°19'
N6-P6	6.45	216°07'
P6-Q6	18.53	279°50'
Q6-R6	15.44	265°19'
R6-S6	36.70	195°29'
S6-T6	6.87	238°31'
T6-U6	43.76	276°41'
U6-V6	22.08	285°43'
V6-W6	9.22	253°27'
W6-Y6	7.09	196°15'
Y6-Z6	25.98	291°58'
Z6-A7	17.56	307°06'
A7-B7	8.79	252°16'
B7-C7	31.02	181°17'
C7-D7	5.44	218°49'
D7-E7	59.55	273°49'
E7-F7	21.48	269°34'
F7-G7	19.13	338°49'
G7-H7	34.87	321°02'
H7-J7	14.36	293°50'
J7-K7	9.64	215°48'
K7-L7	27.80	190°53'
L7-M7	6.50	274°59'
M7-N7	16.41	299°38'
N7-P7	8.45	205°34'
P7-Q7	18.92	216°42'
Q7-R7	8.85	223°14'
R7-S7	8.98	296°16'
S7-T7	25.39	317°46'
T7-U7	13.78	287°45'
U7-V7	16.32	283°21'



GPS: WGS 84 (Zone 20) reading at Iron found Z10
 N 1240263 E 747785 Accuracy (+/-3.0m)
 O Denotes Peg put unless otherwise stated
 I Denotes Iron put unless otherwise stated

SCALE: 1/2500

Bearings are based on solar observations Distances are in Metres
 PLAN of 8 parcels of land coloured pink in the Ward of Tobago
 Containing together twenty one point three eight nine zero hectares (52A. 3R. 16.8P.)
 Surveyed by me, with due authority, in February 2014 for John G. Woodford
 Certified Correct in accordance with with Regulation 25 (1) of the
 Land Surveyors' Regulations 1998,

Checked by

Entered on Trinidad & Tobago Land Surveyor